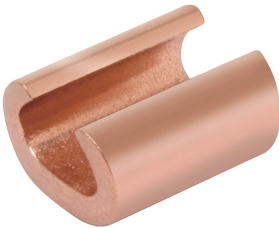




# YC4C8, Copper C-Shape Connector

By Burndy  
Catalog # [YC4C8](#)



CU Compression C Shape Compression Connector, 600 Volts to 35 kV, Run: 6 Sol. - 4 Str., Tap: 8 Sol. - 8 Str.

## Features

- Range-taking connector lowering inventory requirements
- Compact size, easy to tape and insulate connection
- High conductivity wrought copper provides low resistance and excellent electrical conductivity

## Application

For Making Tap Or Parallel Copper Connections

## Specifications

Buy American Compliant	Contact Manufacturer
Certification - cULus	No
EU RoHS Indicator	Yes
Certification - UL Recognized	No
Industry Standard(s)	<ul style="list-style-type: none"><li>• UL 486A</li><li>• UL486B</li></ul>
Buy America(n) Qualified	Contact Manufacturer
Certification - ETL	No
Standards - Industry Standards Met	<ul style="list-style-type: none"><li>• UL 486A</li><li>• UL486B</li></ul>
Standards - RoHS Compliance Status	CM
Certification - CSA Approved	No
UL Listed	Yes

## Conductor

Conductor - Copper Solid Run Range	6 Sol. - 4 Str.
Conductor - Copper Solid Tap	8 AWG
Conductor - Copper Str Run Range	6 Sol. - 4 Str.

Conductor - Copper Str Tap	8 AWG
Conductor Type	Cu C Sol-Size

## Dimensions

Dimension - L Length Overall mm	16 mm
Dimension - Height inch	0.73 in
Dimension - Height mm	0 mm
Dimension - Length Overall inch	0.62 in

## General

Die Index	BG or 5/8
Trade Name	CRIMPIT™
Sub Brand	CRIMPIT
Plated	N
Type	YC-C Series
UPC 12 Digit	781810114254
UPC 14 Digit GTIN	00781810114254
Material	Copper
Plating Type	Unplated
UPC	781810114254

## Logistics

Minimum Pack Quantity	1
Carton Quantity	100
Pallet Quantity	57600

## Product Assets

[Catalog \[English\]](#)